

Olfm1 Antibody (N-term)
Purified Rabbit Polyclonal Antibody (Pab)
Catalog # AP2719a**Specification**

Olfm1 Antibody (N-term) - Product Information

Application	WB, IHC-P,E
Primary Accession	Q99784
Other Accession	Q62609 , Q88998 , Q9IAK4
Reactivity	Human
Predicted	Chicken, Mouse, Rat
Host	Rabbit
Clonality	Polyclonal
Isotype	Rabbit IgG
Antigen Region	71-100

Olfm1 Antibody (N-term) - Additional Information**Gene ID** 10439**Other Names**

Noelin, Neuronal olfactomedin-related ER localized protein, Olfactomedin-1, OLFM1, NOE1, NOEL1

Target/Specificity

This Olfm1 antibody is generated from rabbits immunized with a KLH conjugated synthetic peptide between 71-100 amino acids from the N-terminal region of human Olfm1.

Dilution

WB~~1:1000

IHC-P~~1:10~50

E~~Use at an assay dependent concentration.

Format

Purified polyclonal antibody supplied in PBS with 0.09% (W/V) sodium azide. This antibody is prepared by Saturated Ammonium Sulfate (SAS) precipitation followed by dialysis against PBS.

Storage

Maintain refrigerated at 2-8°C for up to 2 weeks. For long term storage store at -20°C in small aliquots to prevent freeze-thaw cycles.

Precautions

Olfm1 Antibody (N-term) is for research use only and not for use in diagnostic or therapeutic procedures.

Olfm1 Antibody (N-term) - Protein Information**Name** OLFM1

Synonyms NOE1, NOEL1

Function Contributes to the regulation of axonal growth in the embryonic and adult central nervous system by inhibiting interactions between RTN4R and LINGO1. Inhibits RTN4R-mediated axon growth cone collapse (By similarity). May play an important role in regulating the production of neural crest cells by the neural tube (By similarity). May be required for normal responses to olfactory stimuli (By similarity).

Cellular Location

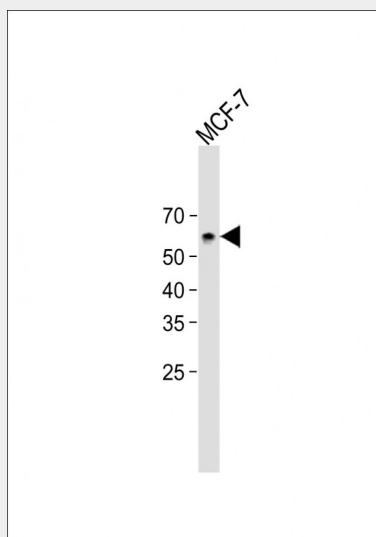
Secreted {ECO:0000250|UniProtKB:O88998}. Synapse {ECO:0000250|UniProtKB:O88998}. Endoplasmic reticulum {ECO:0000250|UniProtKB:O88998}. Cell projection, axon {ECO:0000250|UniProtKB:O88998}. Perikaryon {ECO:0000250|UniProtKB:O88998}

Olfm1 Antibody (N-term) - Protocols

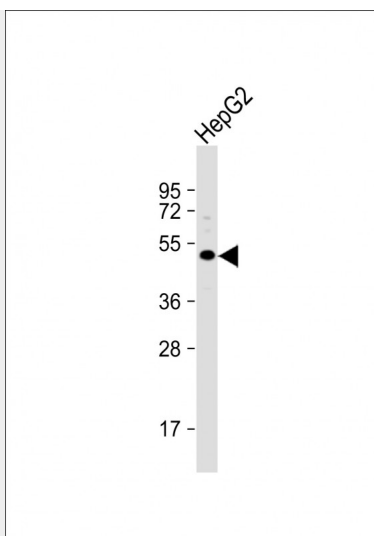
Provided below are standard protocols that you may find useful for product applications.

- [Western Blot](#)
- [Blocking Peptides](#)
- [Dot Blot](#)
- [Immunohistochemistry](#)
- [Immunofluorescence](#)
- [Immunoprecipitation](#)
- [Flow Cytometry](#)
- [Cell Culture](#)

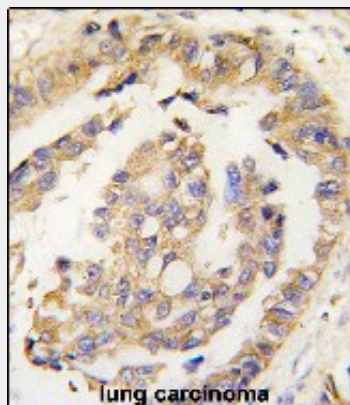
Olfm1 Antibody (N-term) - Images



All lanes: Anti-Olfm1 Antibody (N-term) at 1:1000 dilution + MCF-7 whole cell lysate
Lysates/proteins at 20 µg per lane. Secondary: Goat Anti-Rabbit IgG, (H+L), Peroxidase conjugated (ASP1615) at 1/15000 dilution. Observed band size: 55 KDa Blocking/Dilution buffer: 5% NFDM/TBST.



Anti-Noelin-1(Olfm1) (N-term) at 1:1000 dilution + HepG2 whole cell lysate Lysates/proteins at 20 µg per lane. Secondary Goat Anti-Rabbit IgG, (H+L), Peroxidase conjugated at 1/10000 dilution. Predicted band size : 55 kDa Blocking/Dilution buffer: 5% NFDM/TBST.



Formalin-fixed and paraffin-embedded human lung carcinoma tissue reacted with Olfm1 Antibody (N-term) (Cat.#AP2719a), which was peroxidase-conjugated to the secondary antibody, followed by DAB staining. This data demonstrates the use of this antibody for immunohistochemistry; clinical relevance has not been evaluated.

Olfm1 Antibody (N-term) - Background

Olfm1 shares extensive sequence similarity with the rat neuronal olfactomedin-related ER localized protein. While the exact function of this protein is not known, its abundant expression in brain suggests that it may have an essential role in nerve tissue.

Olfm1 Antibody (N-term) - References

Yokoyama M.,DNA Res. 3:311-320(1996).
Yu W., Genome Res. 7:353-358(1997).
Liu T.,J. Proteome Res. 4:2070-2080(2005).

Olfm1 Antibody (N-term) - Citations

- [Olfactomedin 1 negatively regulates NF-κB signalling and suppresses the growth and metastasis of colorectal cancer cells.](#)
- [Development of autoantibody signatures as novel diagnostic biomarkers of non-small cell lung cancer.](#)

